

PIPE LETTER	PIPE DIMENSION	SPECIFICATIONS	MATERIAL	REMARKS
a	12 X 2.5	DN25H PART 1	S17.4 / AISI 304	
b	25 X 3	DITTO	DITTO	
c	28 X 2	DITTO	DITTO	
d	30 X 3	DITTO	DITTO	
e	35 X 2	DITTO	DITTO	
f	38 X 3	DITTO	DITTO	
g	42 X 2	DITTO	DITTO	
h	60.3 X 5.6	DITTO	DITTO	
i	88.9 X 3.6	DITTO	DITTO	
k	219.1 X 5.9	DITTO	DITTO	

NOTES

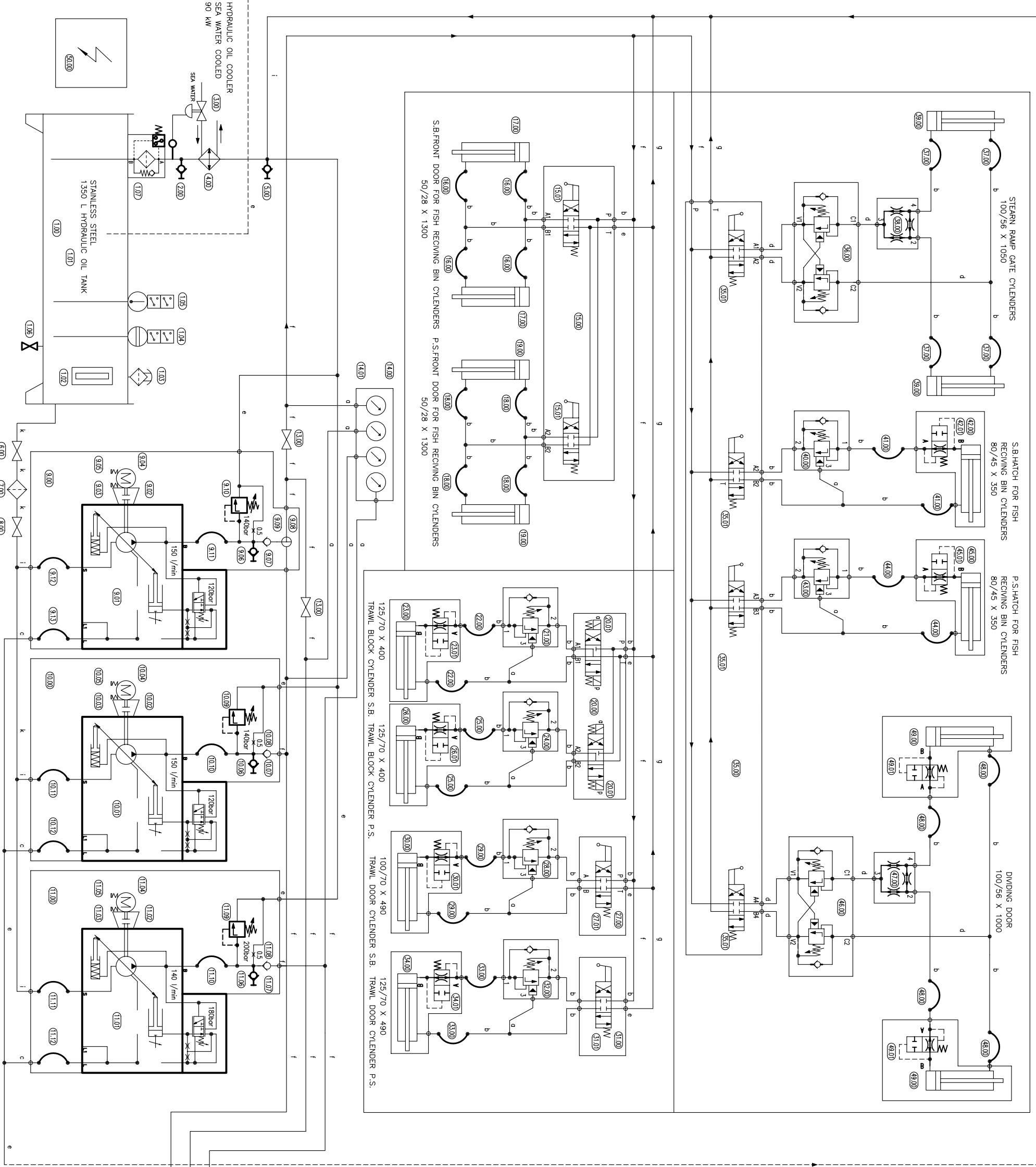
- Pipes diameter x wall thickness in mm have been given on drawing.
- Values of pumps suction side butterfly valves
- Length between pipe hangers 1.5 m
- .
- .

CALCULATIONS

- Calculations of velocity in hydraulic pipes
 - Section lines max 0.5 m/s
 - Return lines max 1.2 m/s
 - Pressure lines max 4 m/s
- Pressure settings of valves
 - Brake valves 1.3 x system pressure
 - Check valves 1.25 x system pressure

PRESSURES

PIPING SPECIFICATION	HYDRAULIC PRESSURE TEST			REMARKS
	WORKING PRESSURE	IN WORKSHOP	ON BOARD	
Hydraulic piping: Pressure and Return	Part x 1	x 1.5	x 1.5	
Station pipelines	Part x 1	x 1.2	x 1.2	



REV.	DATE	BY	CHKD.	SCALE	REVISIONS
1	00.05.04	P		1:3	
2	00.05.04	P		1:3	
3	00.05.04	P		1:3	
4	00.05.04	P		1:3	
5	00.05.04	P		1:3	

GENERAL TOLERANCES (mm)
 UNFRACTIONAL DIMENSIONS: ±0.1
 DECIMAL DIMENSIONS: ±0.05
 HOLE DIA: ±0.05
 SHAFT DIA: ±0.05
 HOLE DIA: ±0.05
 SHAFT DIA: ±0.05

DESIGNED BY: P
 CHECKED BY: P
 DRAWING NO.: HS25-E0629-2-2
 SECONDARY HYDRAULIC SYSTEM SHIP TYPE 5091
 REF. NO.: REF. NO. 1 - SEE DRAWING NUMBER
 SHEET: 1/3
 SIZE: A3
 REV.: 2